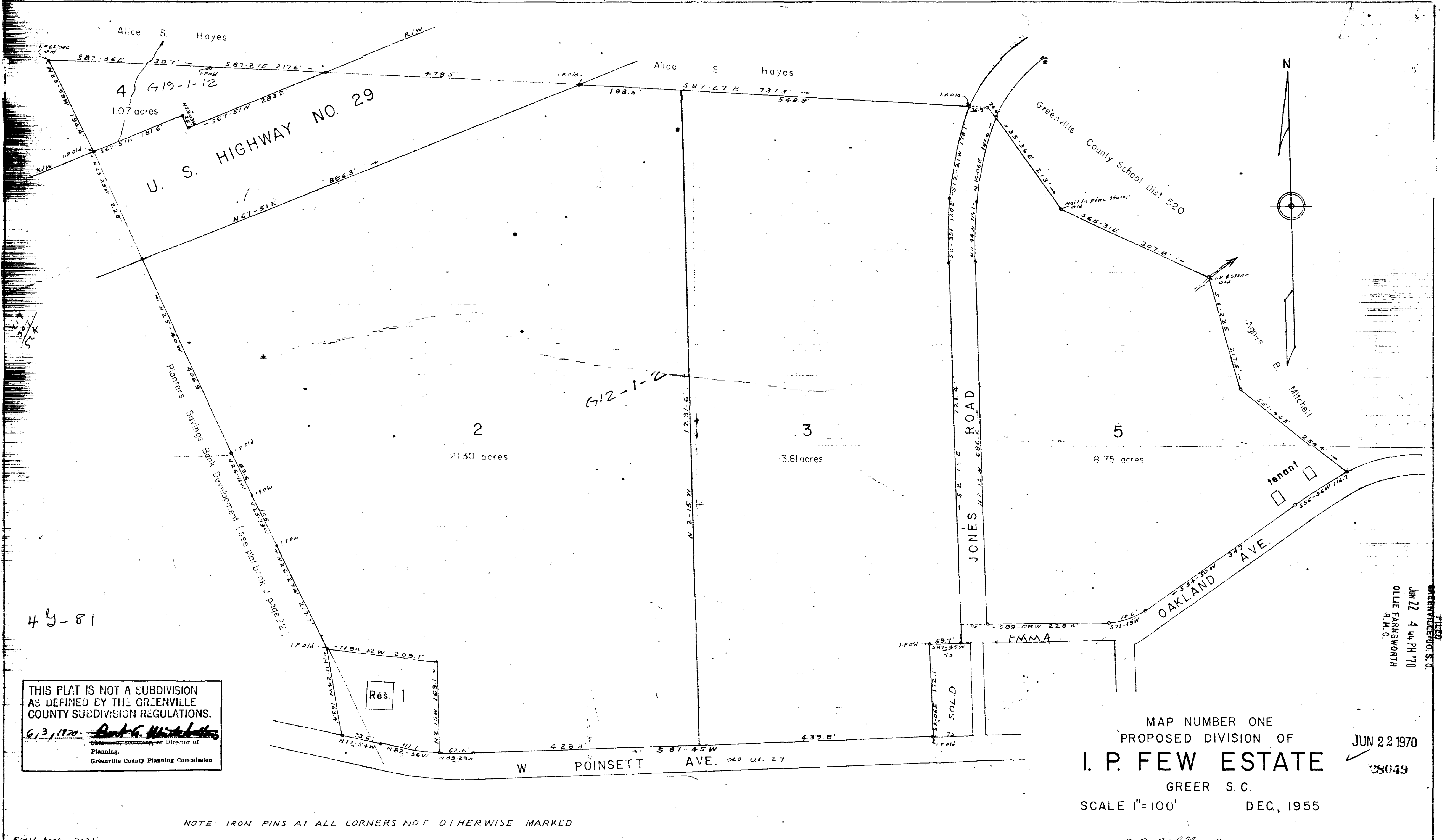


49041
 14 21 1955



THIS PLAT IS NOT A SUBDIVISION
 AS DEFINED BY THE GREENVILLE
 COUNTY SUBDIVISION REGULATIONS.
 6/3/1970 *Paul G. ...*
 Chairman, or Director of
 Planning,
 Greenville County Planning Commission

MAP NUMBER ONE
 PROPOSED DIVISION OF
I. P. FEW ESTATE
 GREER S. C.
 SCALE 1"=100' DEC, 1955
 JUN 22 1970
 38049

NOTE: IRON PINS AT ALL CORNERS NOT OTHERWISE MARKED

GREENVILLE S. C.
 JUN 22 4 44 PM '70
 OLLIE FARNSWORTH
 R. M. C.

G. O. ... - Reg. L.S.